

Beat the Notes (Repeat and Steps)

No. 1 Unfreeze your fingers



No. 2 Elevator going up and down



No. 3 Catch the notes



Beat the notes (Repeat and Steps)

Yvonne (Yu- Ju) Kuan

No. 1 Be a Left Hander

Two staves of musical notation in bass clef, 4/4 time. The first staff contains four measures of quarter notes: G2, A2, B2, C3; D2, E2, F2, G2; A2, B2, C3, D3; E2, F2, G2, A2. The second staff contains four measures: B2, C3, D3, E3; F3, G3, A3, B3; C4, D4, E4, F4; G4, A4, B4, C5.

No. 2 Unfreeze your Hand

Two staves of musical notation in bass clef, 4/4 time. The first staff contains four measures of quarter notes: G2, A2, B2, C3; D2, E2, F2, G2; A2, B2, C3, D3; E2, F2, G2, A2. The second staff contains four measures: B2, C3, D3, E3; F3, G3, A3, B3; C4, D4, E4, F4; G4, A4, B4, C5.

No. 3 One Two Three, CATCH

Two staves of musical notation in bass clef, 3/4 time. The first staff contains four measures of quarter notes: G2, A2, B2, C3; D2, E2, F2, G2; A2, B2, C3, D3; E2, F2, G2, A2. The second staff contains four measures: B2, C3, D3, E3; F3, G3, A3, B3; C4, D4, E4, F4; G4, A4, B4, C5.

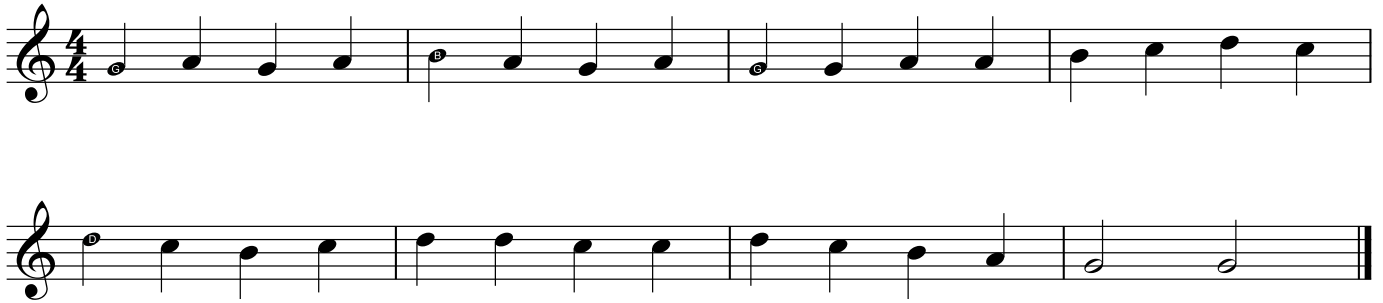
No. 4 New Destination

Two staves of musical notation in bass clef, 4/4 time. The first staff contains four measures of quarter notes: G2, A2, B2, C3; D2, E2, F2, G2; A2, B2, C3, D3; E2, F2, G2, A2. The second staff contains four measures: B2, C3, D3, E3; F3, G3, A3, B3; C4, D4, E4, F4; G4, A4, B4, C5.

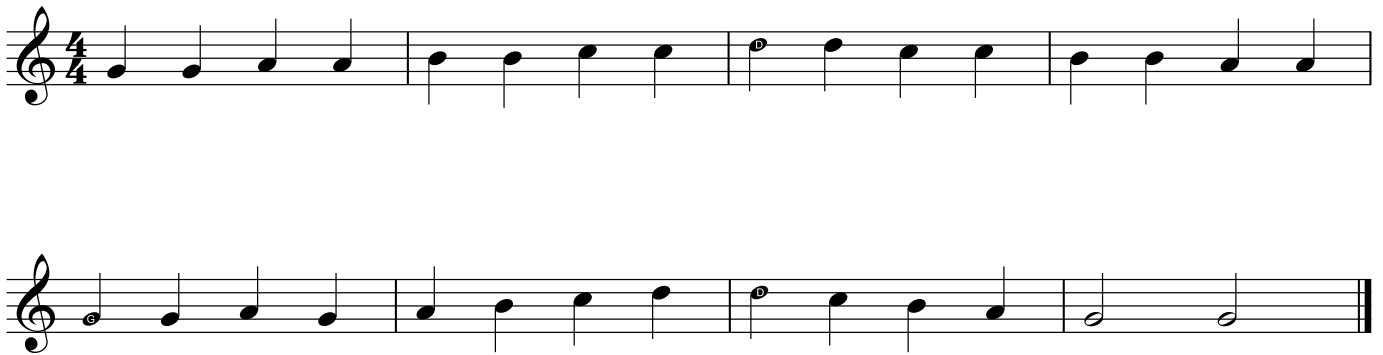
Master G, A, B, C, and D

No. 1

Yvonne (Yu-Ju) Kuan

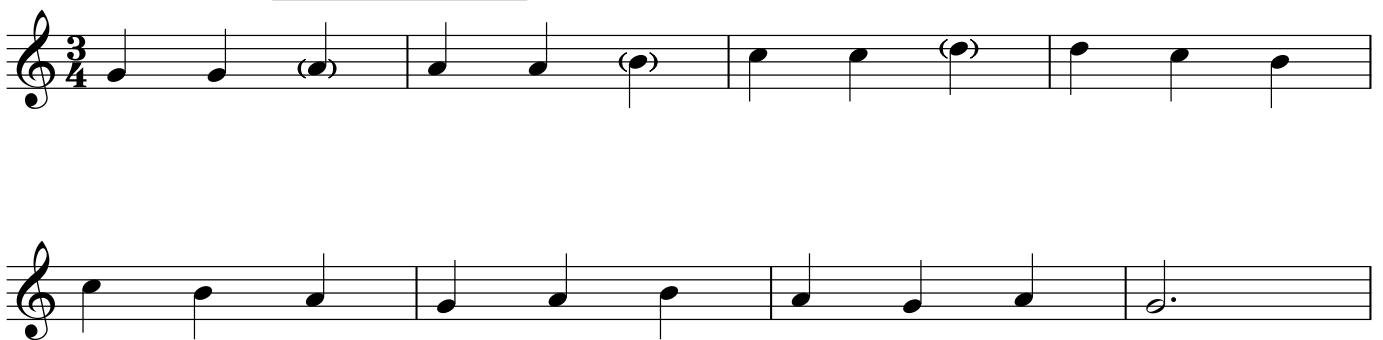


No. 2



No. 3

Change to a different note



No. 4



Mr. D Sitting on the short line

No. 1 Find the "D"

Yvonne (Yu- Ju) Kuan

Two staves of musical notation in bass clef, 4/4 time. The first staff contains a sequence of notes: G2, A2, B2, C3, D3, E3, F3, G3, A3, B3, C4, D4, E4, F4, G4. The second staff contains a sequence of notes: G3, A3, B3, C4, D4, E4, F4, G4, A4, B4, C5, D5, E5, F5, G5.

No. 2 Where is the "D"

Two staves of musical notation in bass clef, 4/4 time. The first staff contains notes: G2, A2, B2, C3, D3, E3, F3, G3, A3, B3, C4, D4, E4, F4, G4. The second staff contains notes: G3, A3, B3, C4, D4, E4, F4, G4, A4, B4, C5, D5, E5, F5, G5.

No. 3 "D", nail it

Change to a different note

Two staves of musical notation in bass clef, 3/4 time. The first staff contains notes: G2, A2, B2, C3, D3, E3, F3, G3, A3, B3, C4, D4, E4, F4, G4. The second staff contains notes: G3, A3, B3, C4, D4, E4, F4, G4, A4, B4, C5, D5, E5, F5, G5.